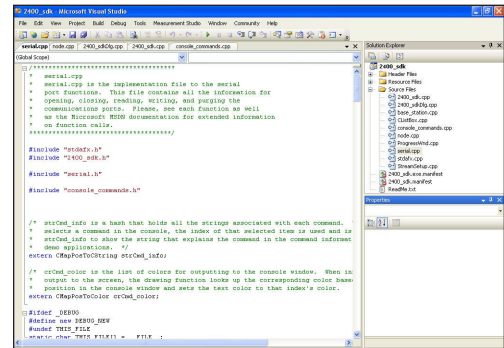


2.4 GHz Wireless Software Development Kit



Introduction

The 2.4 GHz software development kit (SDK) provides application builders with robust protocols and source code samples to support the 2.4 GHz family of wireless sensors including the **V-Link**[®] wireless voltage node, **SG-Link**[®] wireless strain node, **SG-Link**[®]OEM wireless module and **G-Link**[®] wireless accelerometer node. The SDK provides a complete Data Communications Protocol manual as well as code samples for C++, VB and LabVIEW. Sample applications demonstrating most protocol commands are provided with fully-commented source code and a compiled executable for Microsoft[®] Visual Studio C++.NET 7.1, Microsoft VB 6.0, Microsoft[®] VB.NET 2003, Microsoft[®] VB.NET 2005 and LabVIEW[®] 7.1. The source code contains only objects native to the particular IDE (integrated development environment) with no third party controls added.

The SDK is shipped on CD with one license for use.

Features & Benefits

- enables rapid application prototyping and development
- complete data communications protocol
- robust development platform
- fully commented C++, LabView and VB sample code
- support from experienced developers

Applications

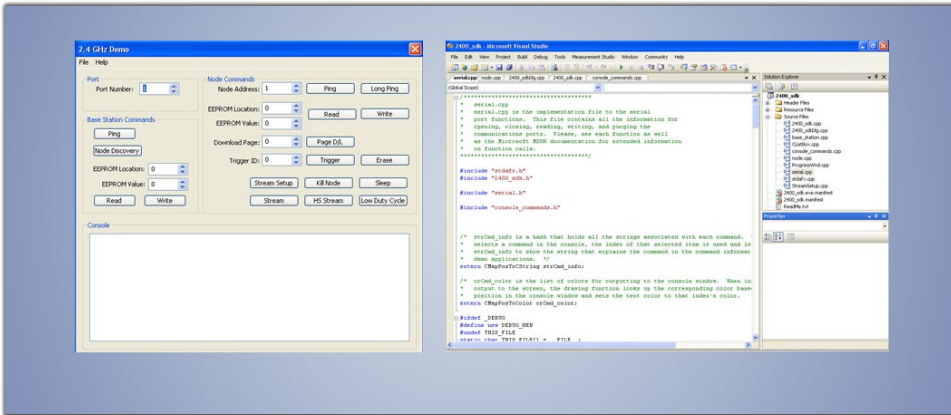
Used to develop software applications for MicroStrain's wireless data acquisition systems:

- inclination & vibration testing and control
- security systems enabled by wireless sensor networks
- assembly line testing with "smart packaging"
- sports performance and sports medicine analysis
- condition based maintenance by wireless sensor networks
- smart machines, smart structures, & smart materials

2.4 GHz Wireless Software Development Kit



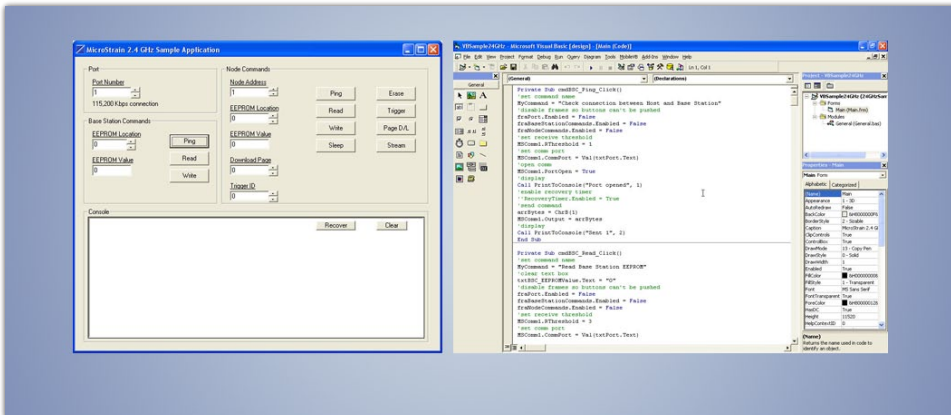
C++



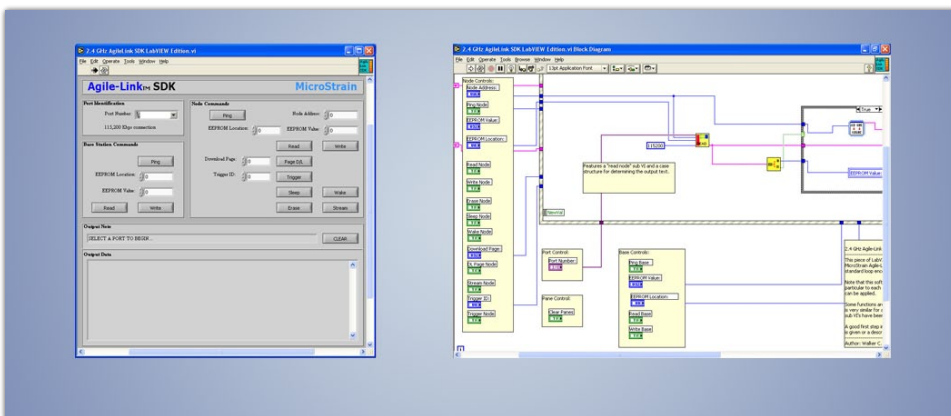
The Data Communications Protocol manual details these commands:

- Ping base station
- Read base station EEPROM
- Write base station EEPROM
- Ping node
- Read node EEPROM
- Write node EEPROM
- Download node datalogging page
- Erase node datalogging pages
- Trigger node datalogging
- Stream node sensor data
- Sleep/Wake node
- Read node single sensor
- Set analog base station
- Broadcast to nodes
- Cycle power
- Set radio frequencies/features
- Low duty-cycle
- Node discovery
- Long ping
- High speed streaming
- Read single sensor
- Auto balance channel
- Stop node

VB



LabVIEW



Disclaimer: The SDK is provided "as is" and any expressed or implied warranties, including, but not limited to, the implied warranties of merchantability and fitness for a particular purpose are disclaimed. In no event shall MicroStrain or its contributors be liable for any direct, indirect, incidental, special, exemplary, or consequential damages (including, but not limited to, procurement of substitute goods or services; loss of use, data, or profits; or business interruption) however caused and on any theory of liability, whether in contract, strict liability, or tort (including negligence or otherwise) arising in any way out of the use of this software, even if advised of the possibility of such damage. Downloading this SDK entitles the user to no additional or special support from MicroStrain beyond that given to normal customers. MicroStrain will make every effort to amplify the instructions contained in the Data Communications Protocol manual but will neither undertake to detail the functioning of the hardware or firmware in the Wireless Sensing System family of wireless sensors nor debug the purchaser's code.



MicroStrain Inc.
 459 Hurricane Lane
 Suite 102
 Williston, VT 05495 USA
 www.microstrain.com

ph: 800-449-3878
 fax: 802-863-4093
 sales@microstrain.com