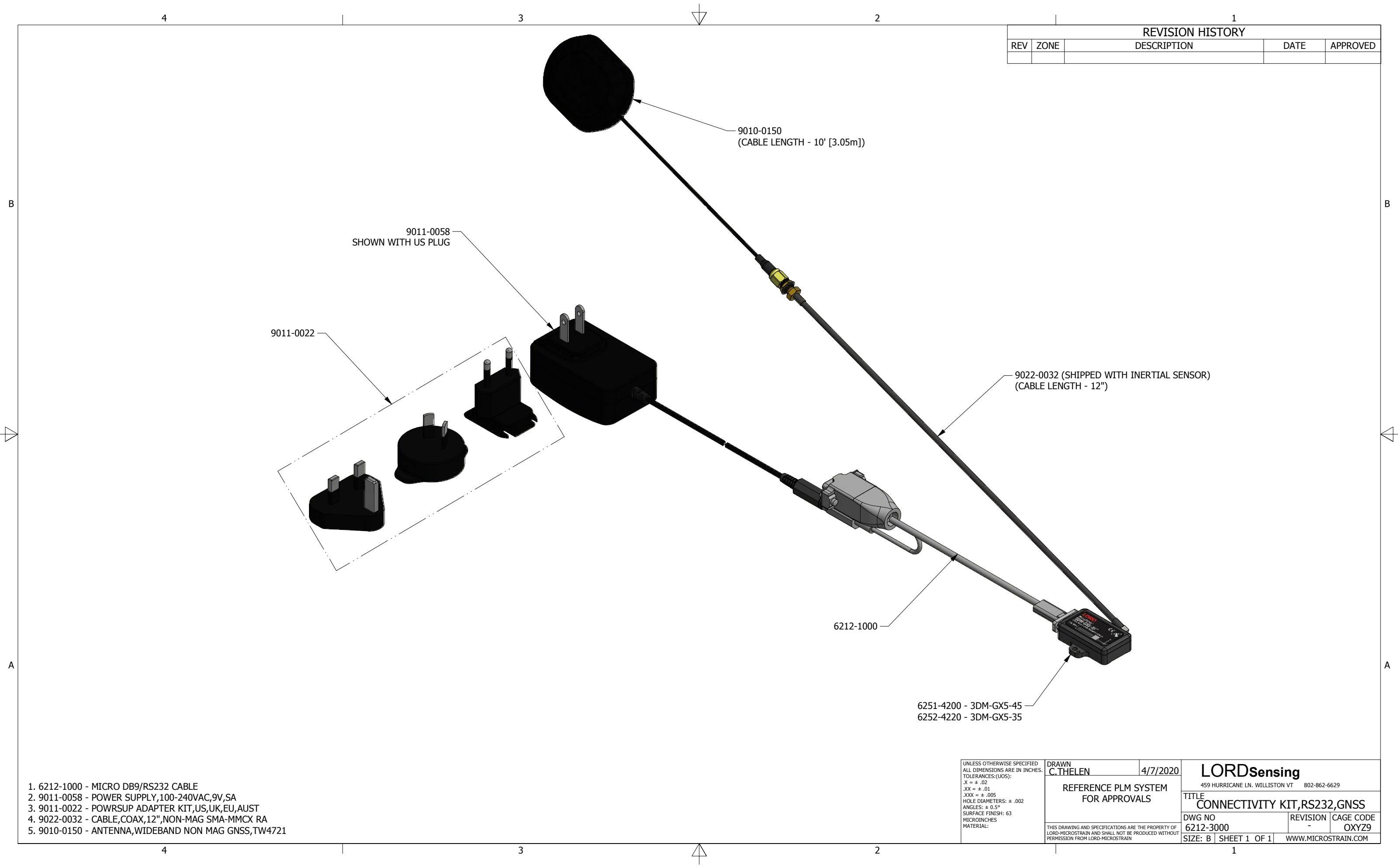


REVISION HISTORY				
REV	ZONE	DESCRIPTION	DATE	APPROVED



1. 6212-1000 - MICRO DB9/RS232 CABLE
2. 9011-0058 - POWER SUPPLY,100-240VAC,9V,SA
3. 9011-0022 - POWRSUP ADAPTER KIT,US,UK,EU,AUST
4. 9022-0032 - CABLE,COAX,12",NON-MAG SMA-MMCX RA
5. 9010-0150 - ANTENNA,WIDEBAND NON MAG GNSS,TW4721

UNLESS OTHERWISE SPECIFIED  
ALL DIMENSIONS ARE IN INCHES.  
TOLERANCES:(UOS):  
.X = ± .02  
.XX = ± .01  
.XXX = ± .005  
HOLE DIAMETERS: ± .002  
ANGLES: ± 0.5°  
SURFACE FINISH: 63  
MICROINCHES  
MATERIAL:

DRAWN C.THELEN	4/7/2020
REFERENCE PLM SYSTEM FOR APPROVALS	
THIS DRAWING AND SPECIFICATIONS ARE THE PROPERTY OF LORD-MICROTRAIN AND SHALL NOT BE PRODUCED WITHOUT PERMISSION FROM LORD-MICROTRAIN	

<b>LORDSensing</b> 459 HURRICANE LN. WILLISTON VT 802-862-6629		
TITLE CONNECTIVITY KIT,RS232,GNSS		
DWG NO 6212-3000	REVISION -	CAGE CODE OXYZ9
SIZE: B	SHEET 1 OF 1	WWW.MICROTRAIN.COM