

LS-LVDT™

Compact Linear Displacement Sensor



LS-LVDT- *robust and highly accurate displacement sensor with revolutionary stroke-body length ratios.*

Ideal for linear control and precision measurement applications, the miniature LS-LVDT provides fast response and rugged packaging. Configuration options can provide cutting-edge features, including micron resolution, linear analog output, flat dynamic response to kHz levels, and/or very low temperature coefficients. Its free sliding transducer core is lightweight, strong, and corrosion-resistant. The cores are precision ground to insure a close sliding fit within the open bore of the stainless steel lined LS-LVDT body. This precision allows the LS-LVDT to achieve extremely high repeatability. The sensing head is capable of total submersion in aqueous environments. **NOTE:** This sensor is designed for use with LORD Sensing DEMOD signal conditioners.

Product Highlights

- 50 mm, 100 mm, and 150 mm stroke lengths available
- Extremely compact packaging with sensor body only 25 mm longer than the stroke length
- Unguided armature
- For use with standard LORD DEMOD signal conditioners.
- $\pm 2\%$ to $\pm 0.2\%$ accuracy

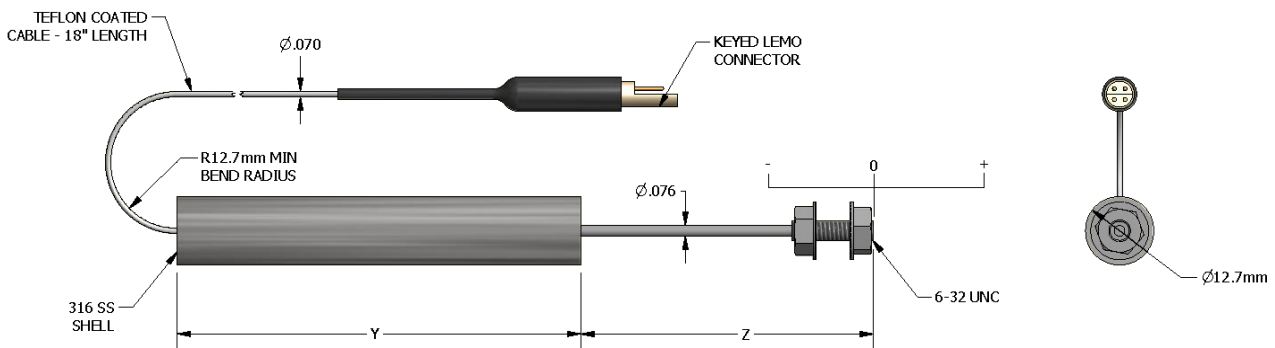
Features and Benefits

High Performance

- High-resolution with large stroke/size ratio
- Frictionless design for robust use over millions of cycles
- Suitable for use in harsh fluids and environments
- High dynamic range for difficult measurements

Applications

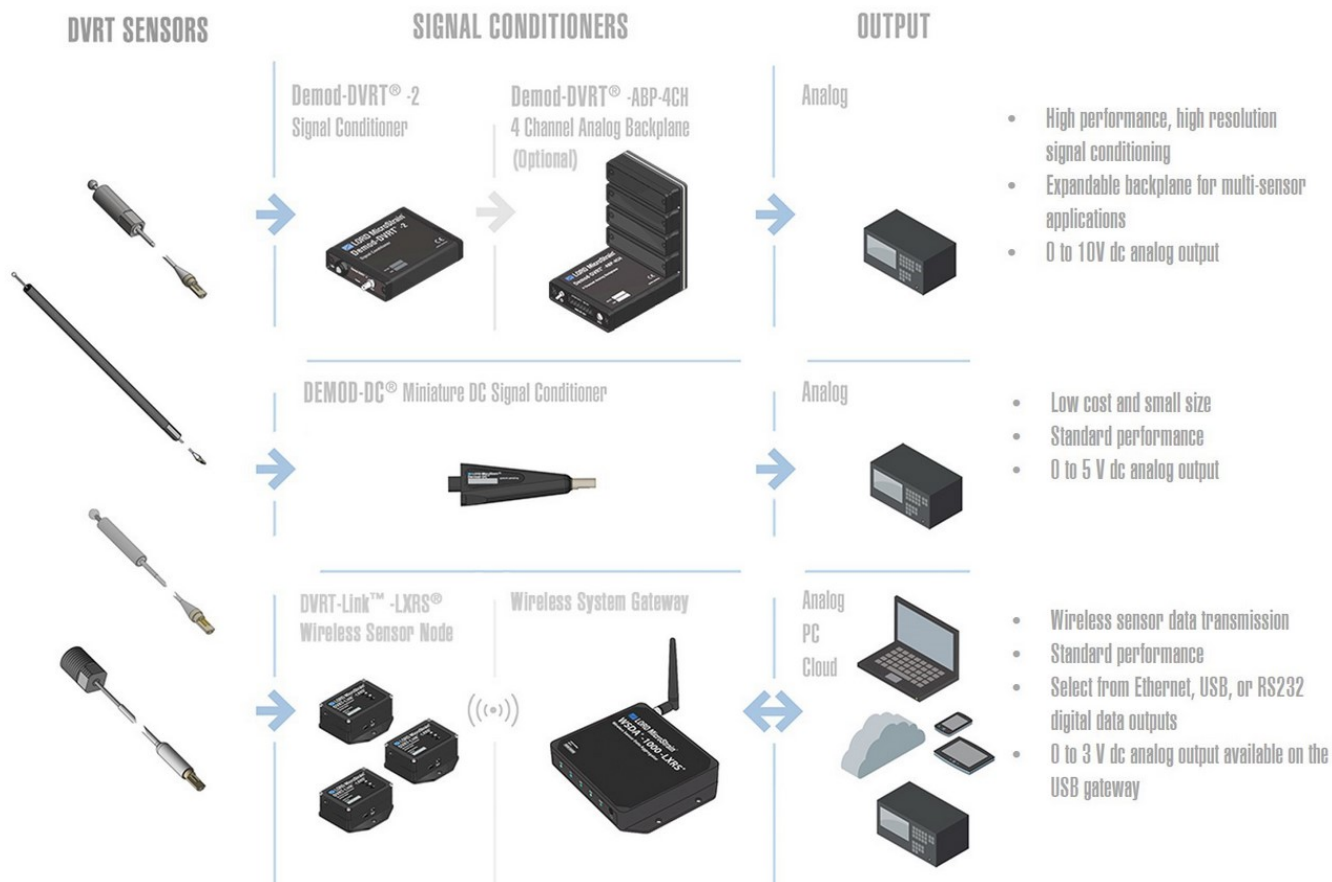
- Process control for production line monitoring
- Miniature position control elements
- Measuring strain and deflection in materials and structures
- Dimensional gauging for quality control



LS-LVDT PN	Y	Z	STROKE LENGTH
6132-0002	75mm	50.4mm	50mm
6132-0001	125mm	75.4mm	100mm
6312-0000	175mm	100.4mm	150mm

Specifications

	DEMOD-DC	DEMOD-DVRT
Linear stroke lengths	±25 mm, ±50 mm, ±75 mm	
Accuracy	±1% Peak (typical), (±2% max) with straight line 0.2% RMS with multi-segment 0.1% RMS with polynomial	
Frequency response	800 Hz standard, 10 Hz-20 kHz optional	
Temperature coefficients	Offset 0.002%/FS/° C typical, Span 0.04%/FS/° C typical	
Housing material	316 Stainless steel	
Core material	316 stainless steel shell with ferrous core	
Cable material	Teflon coated	
Electrical connector	4 Pin PEEK LEMO connector	
Temperature range	-55 - 150° C	
Resolution (800 Hz LPF)	0.2% FS typical	0.04% FS typical
Sensitivity	0-5 VDC FS	0-10 VDC FS



LORD SENSING

ph: 802-862-6629
sensing_sales@LORD.com
sensing_support@LORD.com