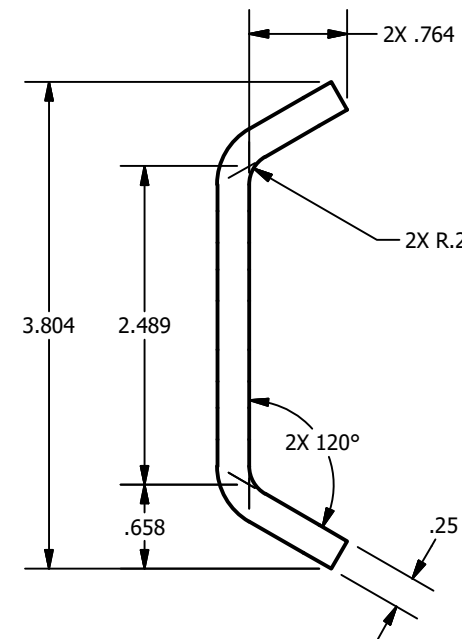
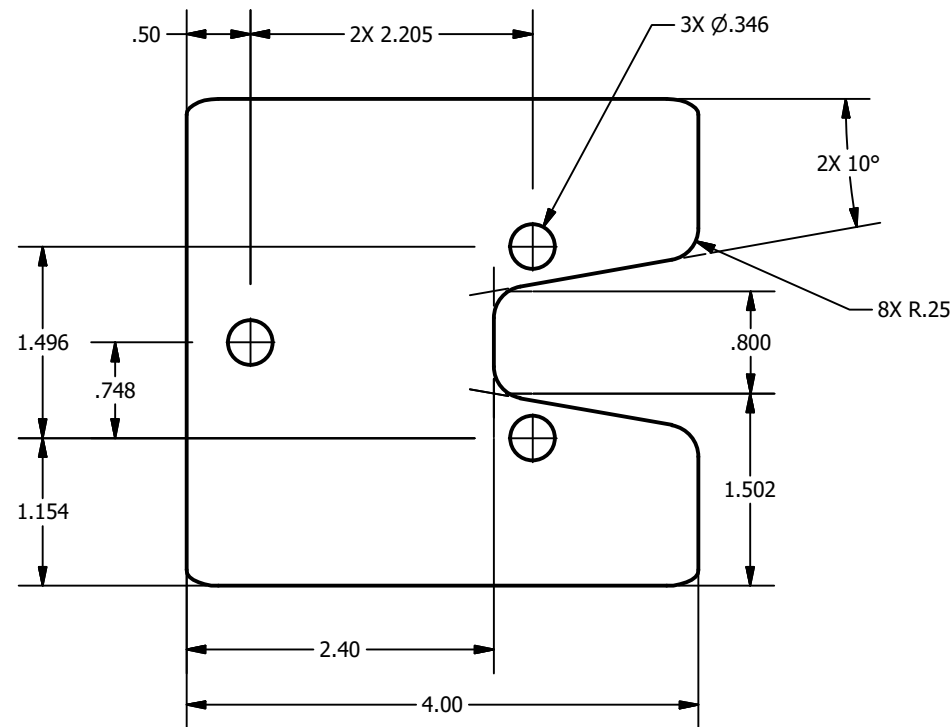
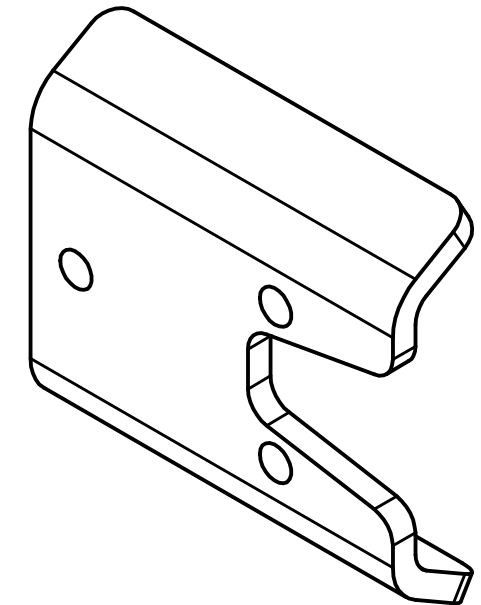



REVISION HISTORY				
REV	AUTHOR	DESCRIPTION	DATE	APPROVED
A	Joe Beckwith	ADDED MISSING DIM, PRIMER FINISH, DEBURRING	12/18/2018	



- NOTES:
1. MATERIAL: ASTM A36
  2. BREAK ALL EDGES VIA VIBRATORY TUMBLER OR SIMILAR METHOD
  3. DEBURR ALL HOLES
  4. FINISH: RUST-INHIBITIVE STEEL PRIMER
  5. FINISH COLOR: GRAY

**PROPRIETARY NOTICE**  
 THE INFORMATION CONTAINED HEREIN IS PROPRIETARY TO LORD CORPORATION AND SHALL NOT BE REPRODUCED, DISCLOSED, OR USED FOR ANY DESIGN OR MANUFACTURE WITHOUT WRITTEN AUTHORIZATION FROM LORD CORPORATION.

UNLESS OTHERWISE SPECIFIED: DIMENSIONS ARE IN INCHES TOLERANCES: .X = ± .02 .XX = ± .01 .XXX = ± .005 HOLE DIAMETERS: ± .002 ANGLES: ± 0.5° SURFACE FINISH: 63 µin MACHINED SURFACES: 125 µin MAX BREAK ALL SHARP EDGES: 0.005 - 0.025 DIMENSIONS IN [ ] ARE MM		NAME Joe Beckwith	DATE 12/17/2018	 LORD CORPORATION 459 HURRICANE LANE WILLISTON, VT 05495	
		DRAWN			TITLE: MV5 IMPACT SHIELD
		CHECKED			
		ENG APPR.			
		MFG APPR.			
		Q.A.			
		COMMENTS:		SIZE <b>B</b>	
MATERIAL Steel ASTM A36				DWG. NO. 3065-0297	
FINISH PRIMER, GRAY				REV A	
				SCALE: 2:3	
				WEIGHT: 1.119 lbmass	
				SHEET 1 OF 1	