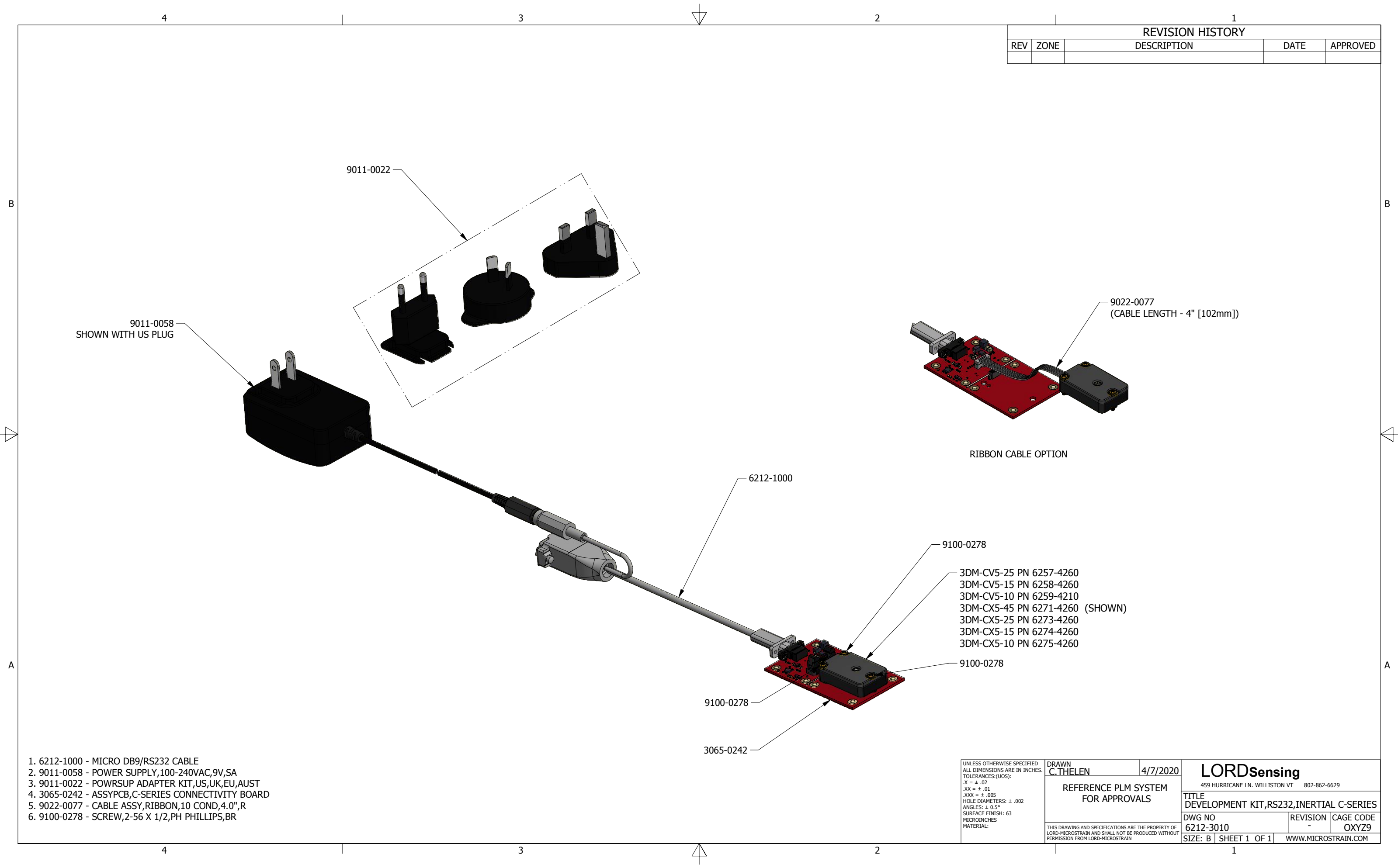


REVISION HISTORY				
REV	ZONE	DESCRIPTION	DATE	APPROVED



- 6212-1000 - MICRO DB9/RS232 CABLE
- 9011-0058 - POWER SUPPLY,100-240VAC,9V,SA
- 9011-0022 - POWRSUP ADAPTER KIT,US,UK,EU,AUST
- 3065-0242 - ASSYPCB,C-SERIES CONNECTIVITY BOARD
- 9022-0077 - CABLE ASSY,RIBBON,10 COND,4.0",R
- 9100-0278 - SCREW,2-56 X 1/2,PH PHILLIPS,BR

UNLESS OTHERWISE SPECIFIED ALL DIMENSIONS ARE IN INCHES. TOLERANCES:(UOS): .X = ± .02 .XX = ± .01 .XXX = ± .005 HOLE DIAMETERS: ± .002 ANGLES: ± 0.5° SURFACE FINISH: 63 MICROINCHES MATERIAL:	DRAWN C.THELEN	4/7/2020	LORDSensing 459 HURRICANE LN. WILLISTON VT 802-862-6629		
	REFERENCE PLM SYSTEM FOR APPROVALS		TITLE DEVELOPMENT KIT,RS232,INERTIAL C-SERIES		
	THIS DRAWING AND SPECIFICATIONS ARE THE PROPERTY OF LORD-MICROTRAIN AND SHALL NOT BE PRODUCED WITHOUT PERMISSION FROM LORD-MICROTRAIN		DWG NO 6212-3010	REVISION -	CAGE CODE OXYZ9
	SIZE: B		SHEET 1 OF 1	WWW.MICROTRAIN.COM	

4

3

2

1

B

B

A

A

4

3

2

1